

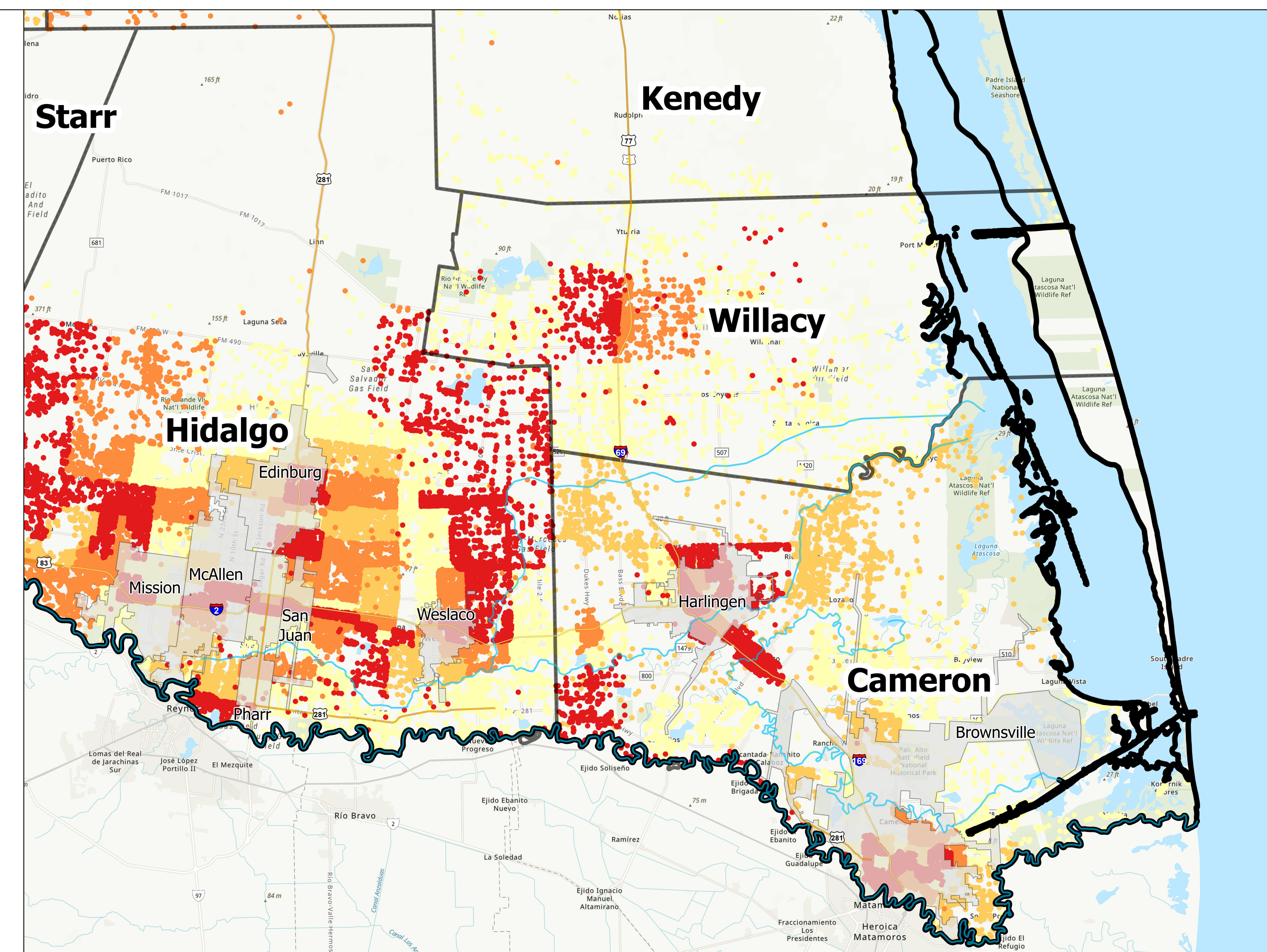
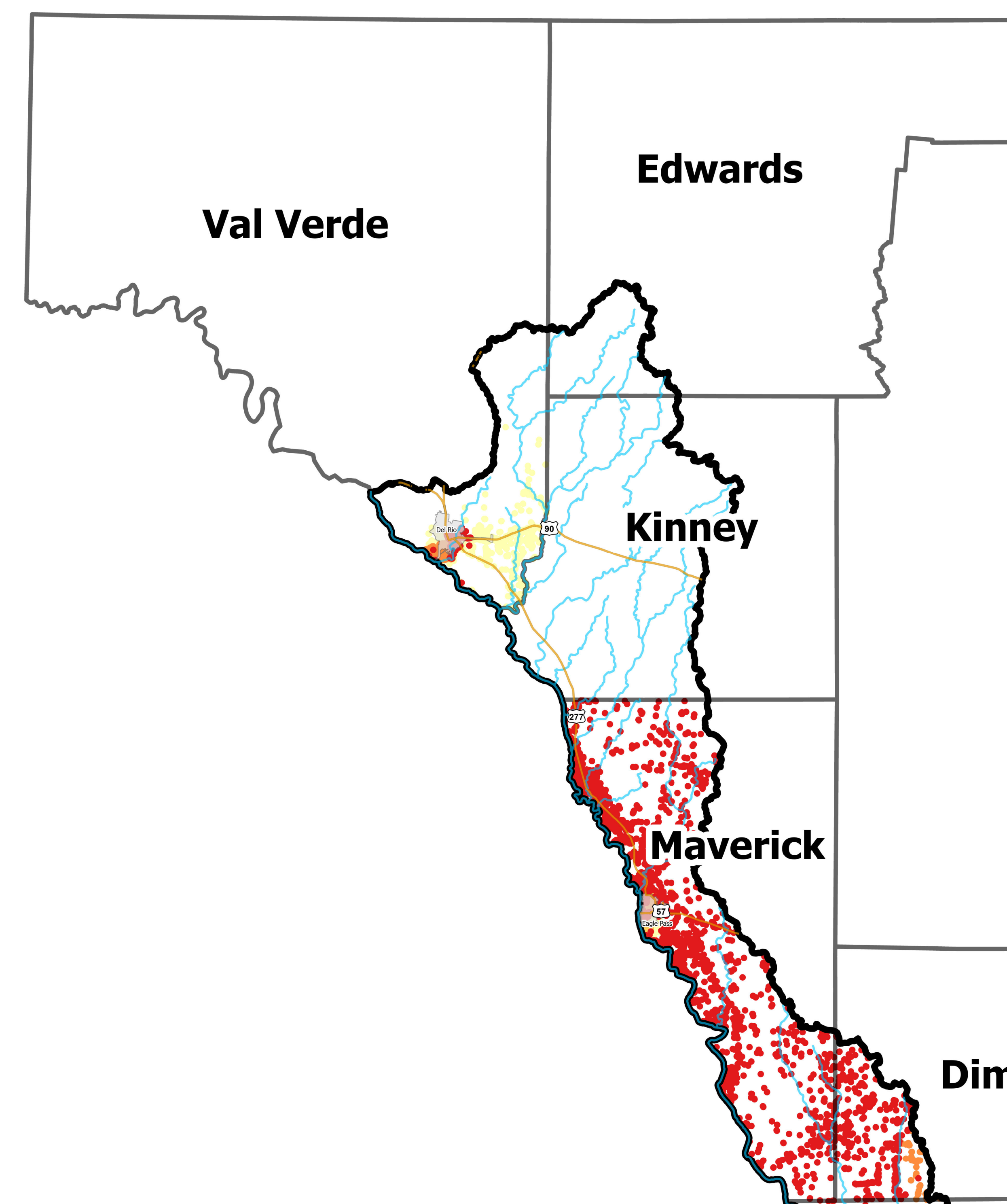
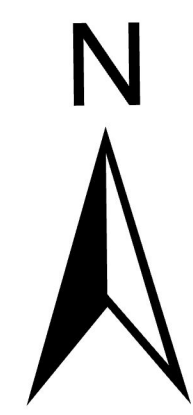
2023 REGIONAL **FLOOD PLAN** REGION 15 LOWER RIO GRANDE

VOL. 2-2



APPENDIX A - MAPS

MAPS 7-12



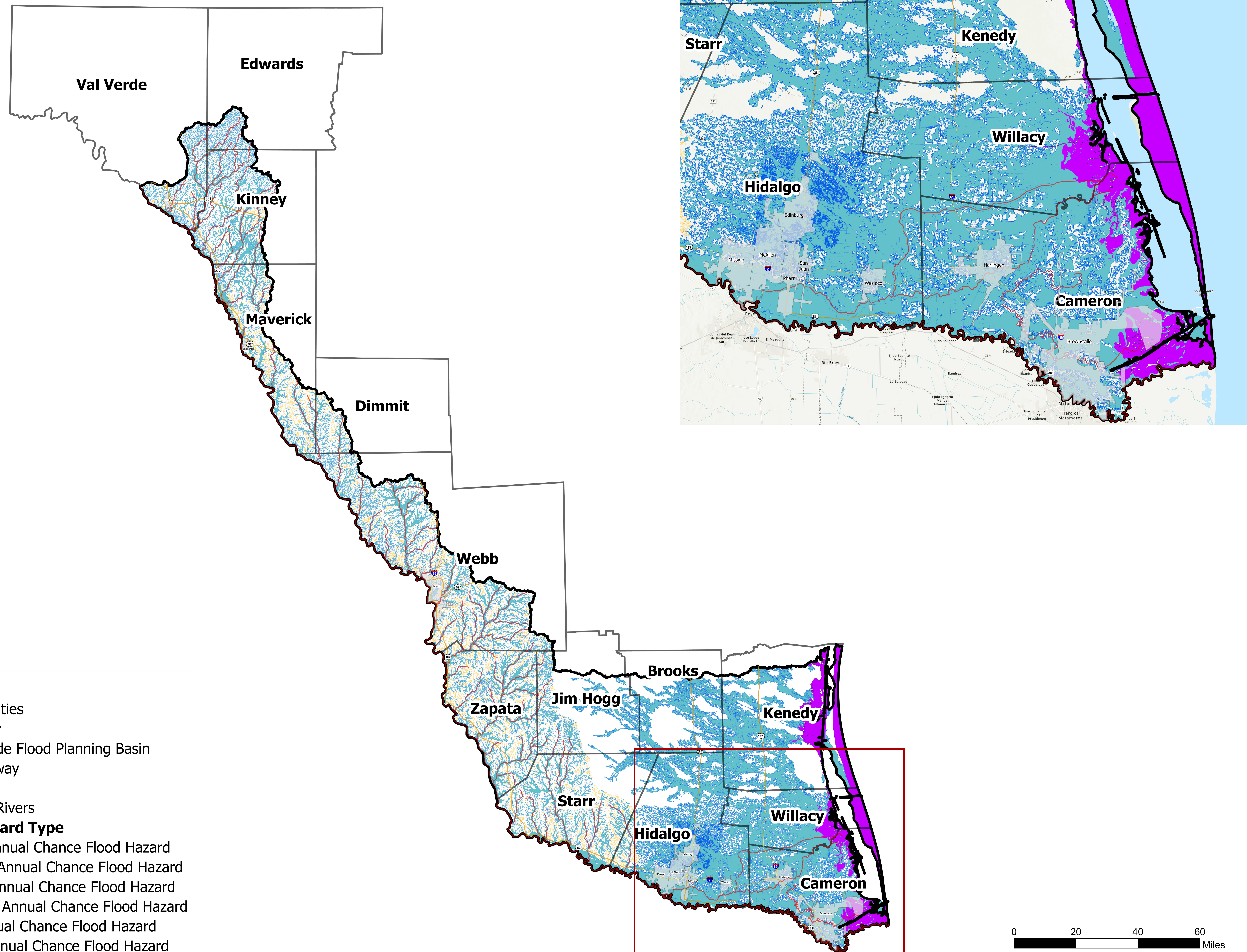
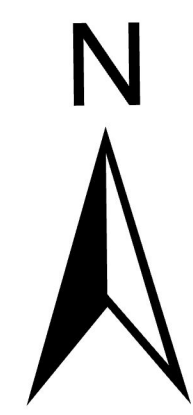
Key to Features

- Major Municipalities
- Regional County
- Lower Rio Grande Flood Planning Basin
- Interstate Highway
- US Highway
- Major Streams/Rivers

Critical Infrastructure with Social Vulnerability Index (Above 0.75)

- 0.75 - 0.85
- 0.85 - 0.90
- 0.90 - 0.95
- 0.95 - 1.00

0 20 40 60 Miles

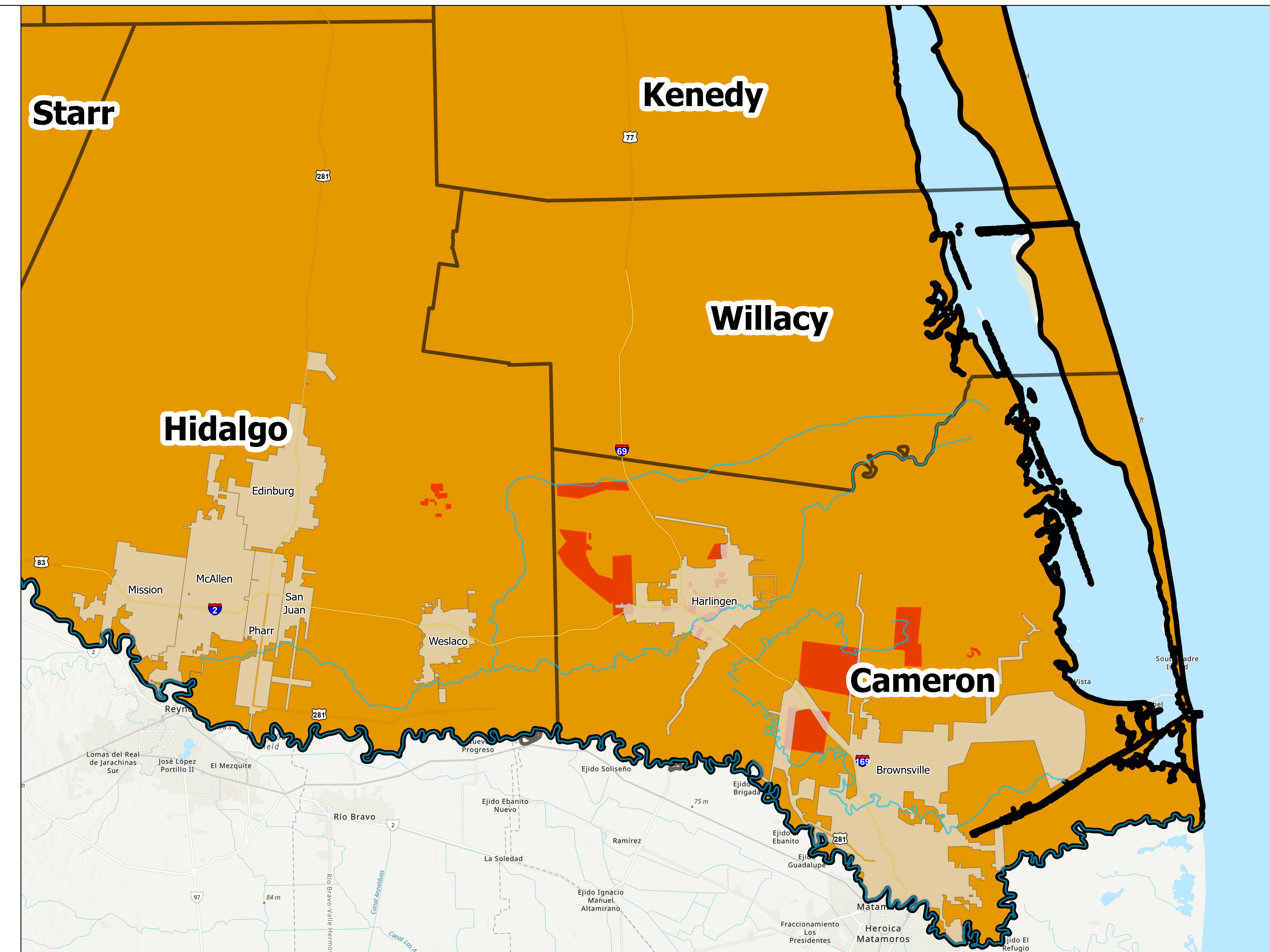
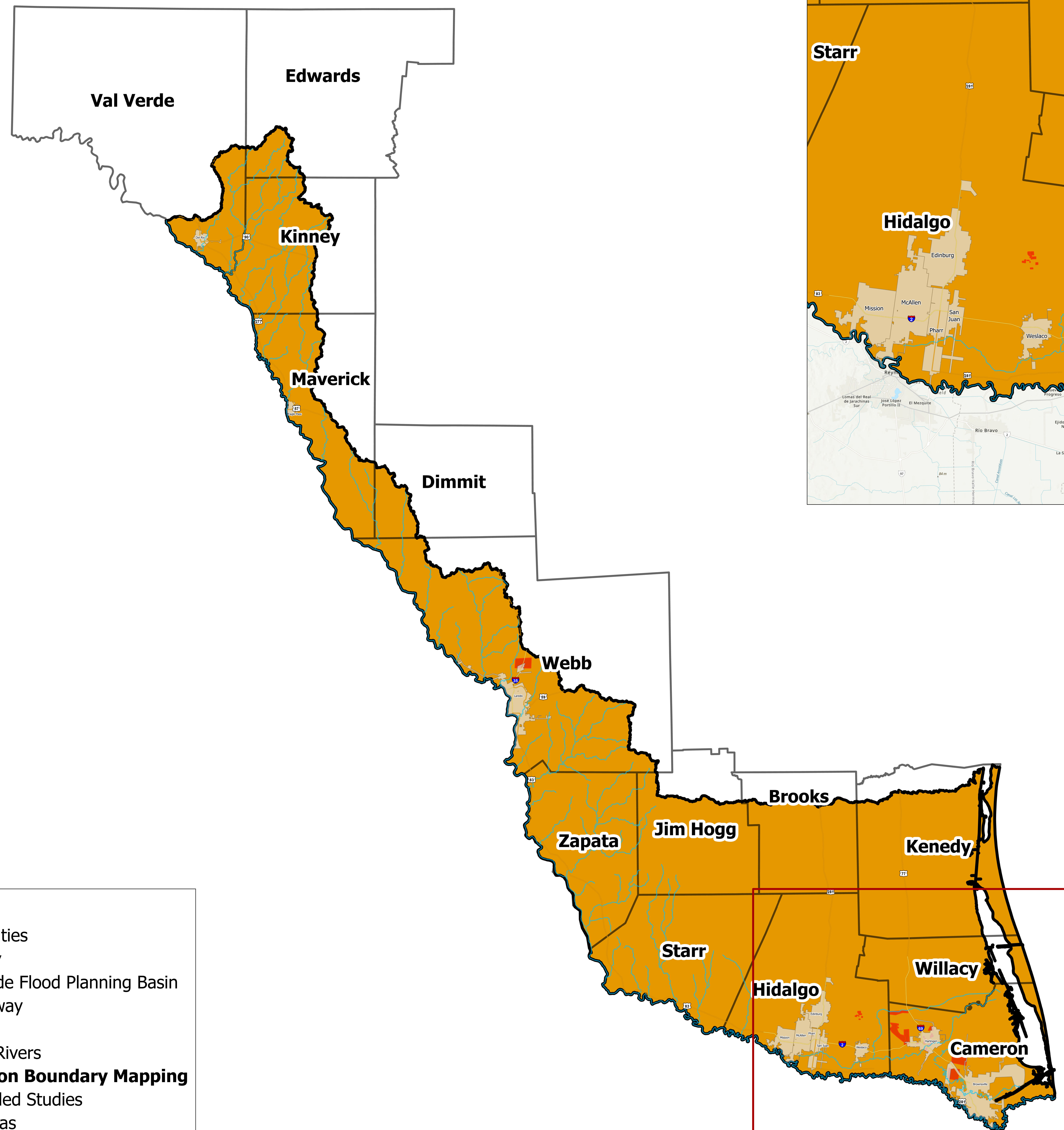
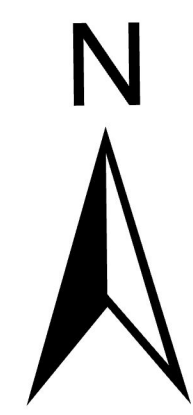


Key to Features

- Major Municipalities
- Regional County
- Lower Rio Grande Flood Planning Basin
- Interstate Highway
- US Highway
- Major Streams/Rivers

Future Flood Hazard Type

- Coastal - 1% Annual Chance Flood Hazard
- Coastal - 0.2% Annual Chance Flood Hazard
- Riverine - 1% Annual Chance Flood Hazard
- Riverine - 0.2% Annual Chance Flood Hazard
- Local - 1% Annual Chance Flood Hazard
- Local - 0.2% Annual Chance Flood Hazard

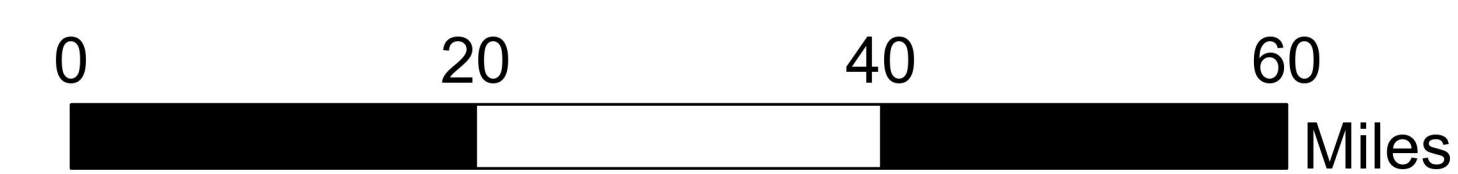


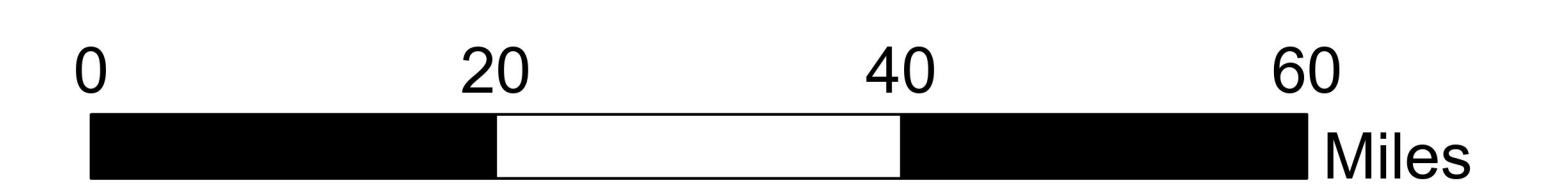
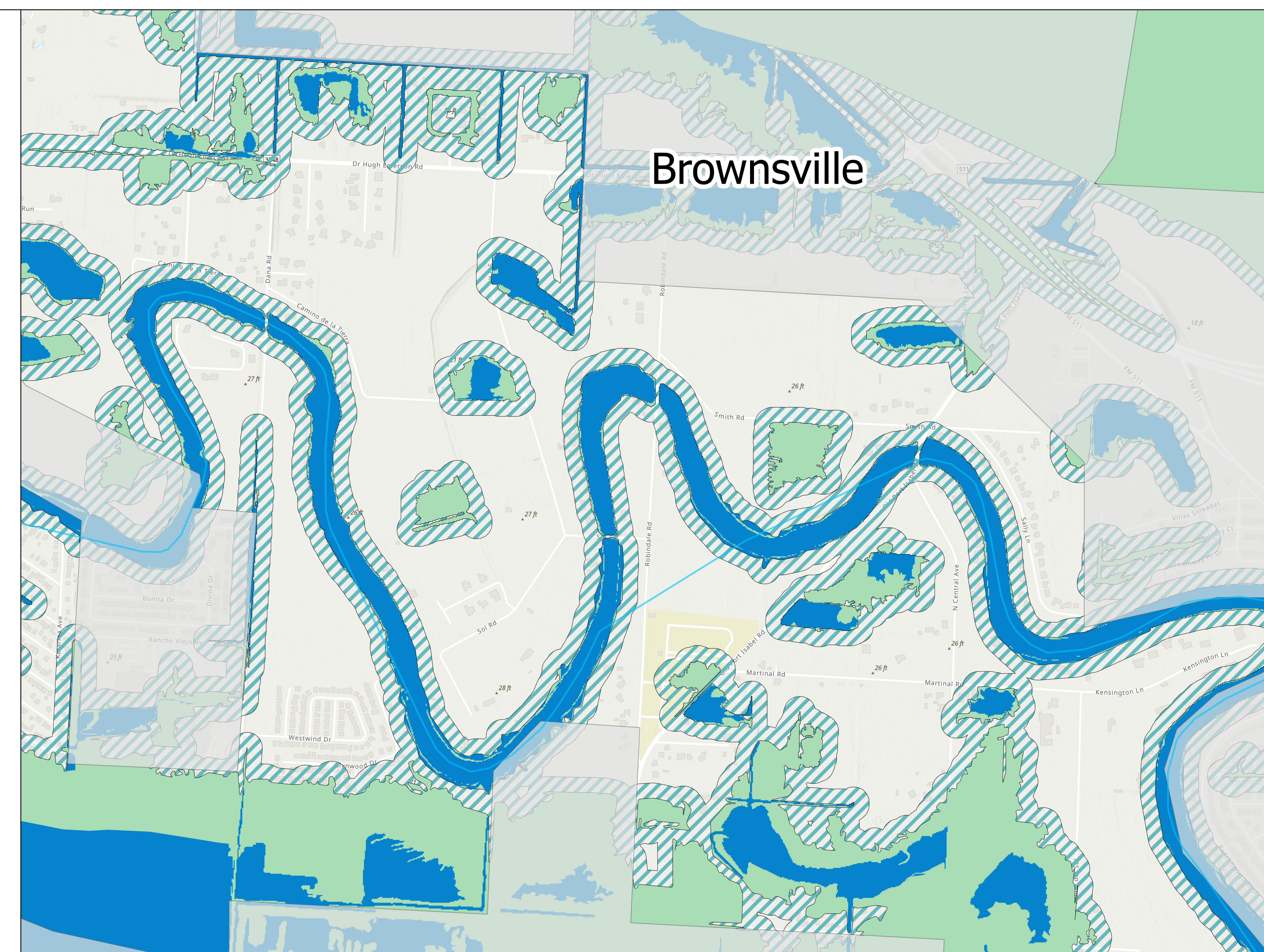
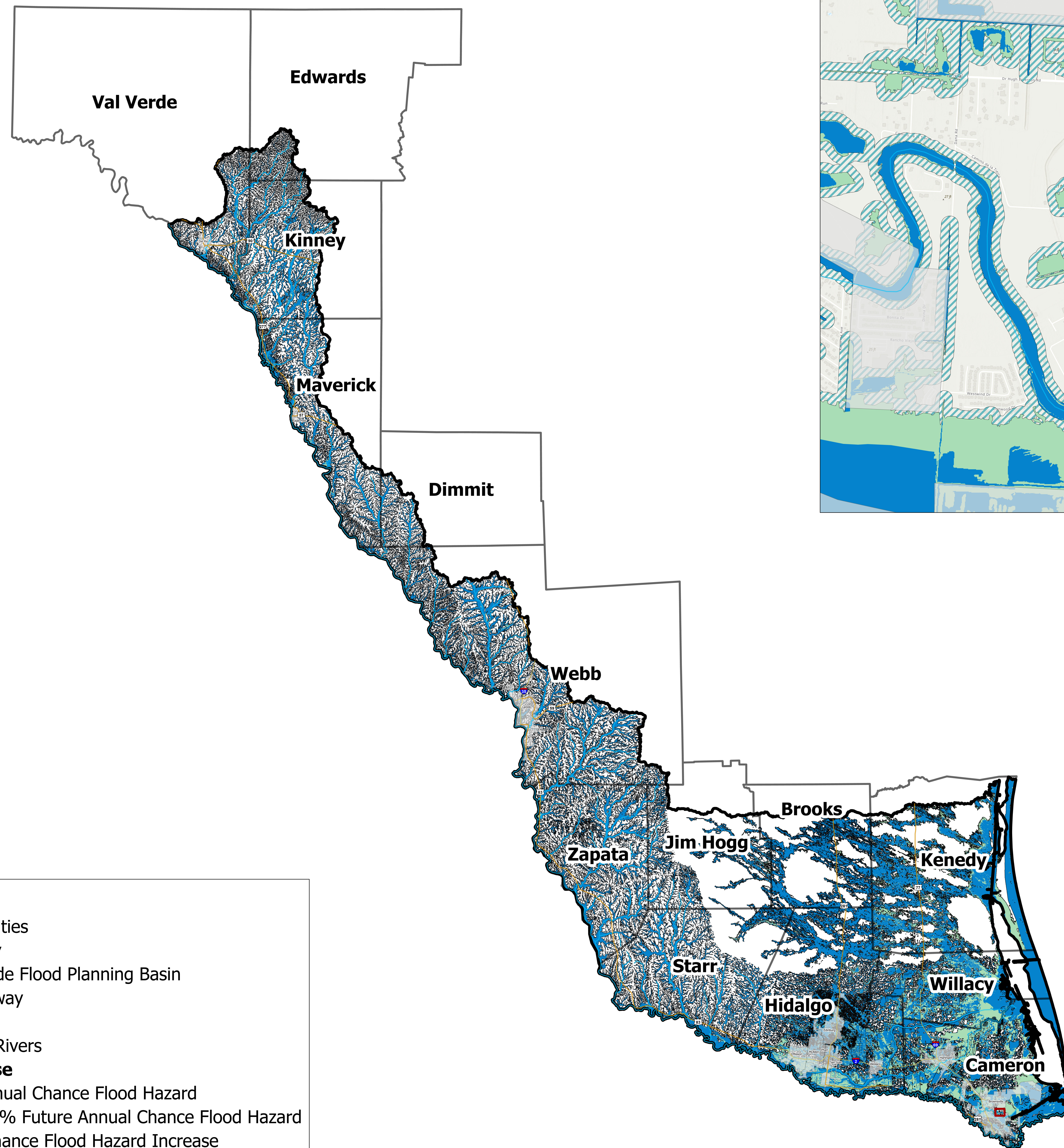
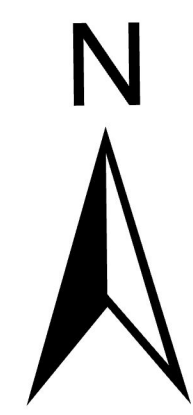
Key to Features

- Major Municipalities
- Regional County
- Lower Rio Grande Flood Planning Basin
- Interstate Highway
- US Highway
- Major Streams/Rivers

Gaps in Inundation Boundary Mapping

- No Future Detailed Studies
- Flood Prone Areas



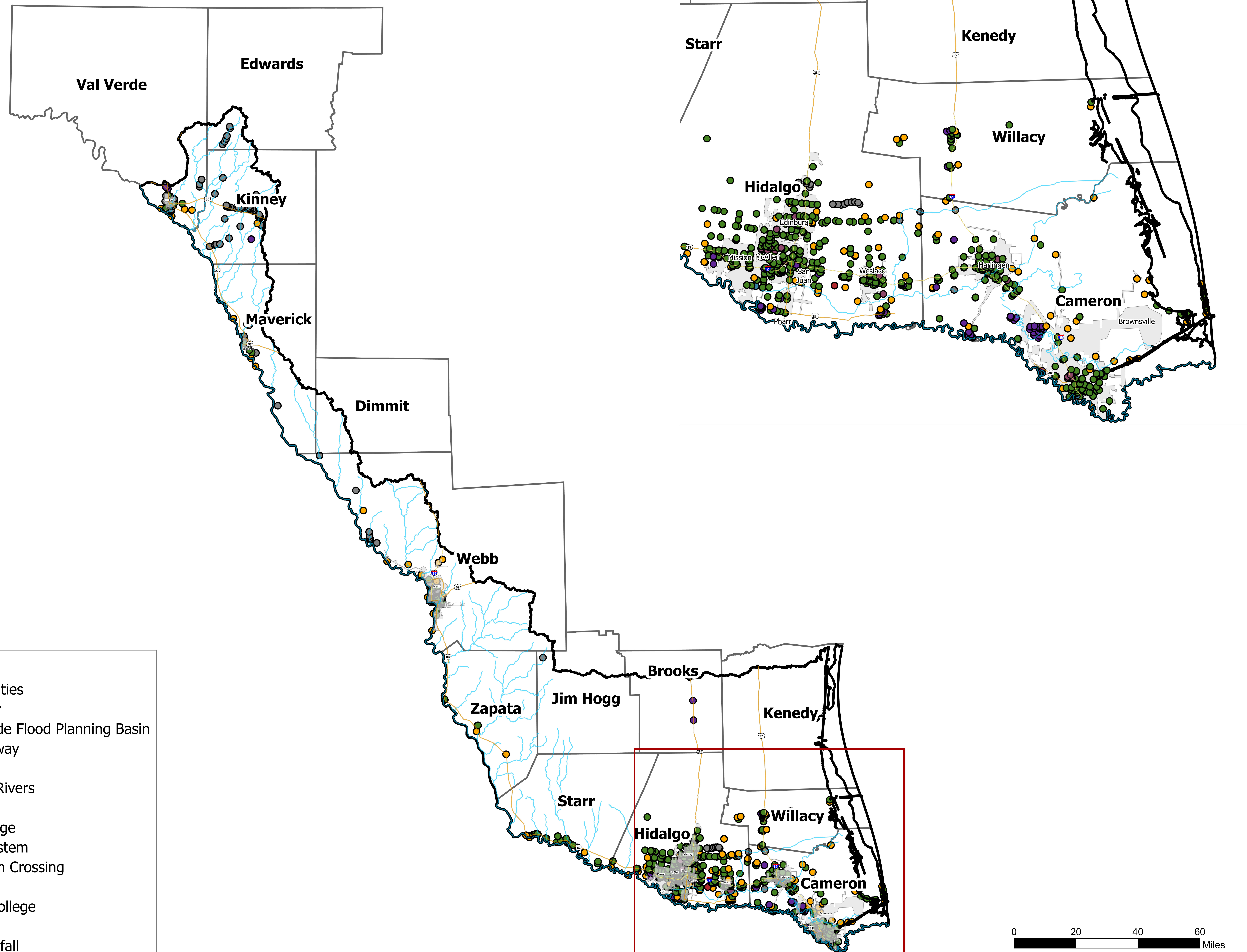
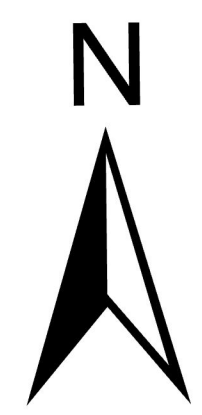


Key to Features

- Major Municipalities
- Regional County
- Lower Rio Grande Flood Planning Basin
- Interstate Highway
- US Highway
- Major Streams/Rivers

Extent of Increase

- 1% Existing Annual Chance Flood Hazard
- 0.2% Existing/1% Future Annual Chance Flood Hazard
- 0.2% Annual Chance Flood Hazard Increase



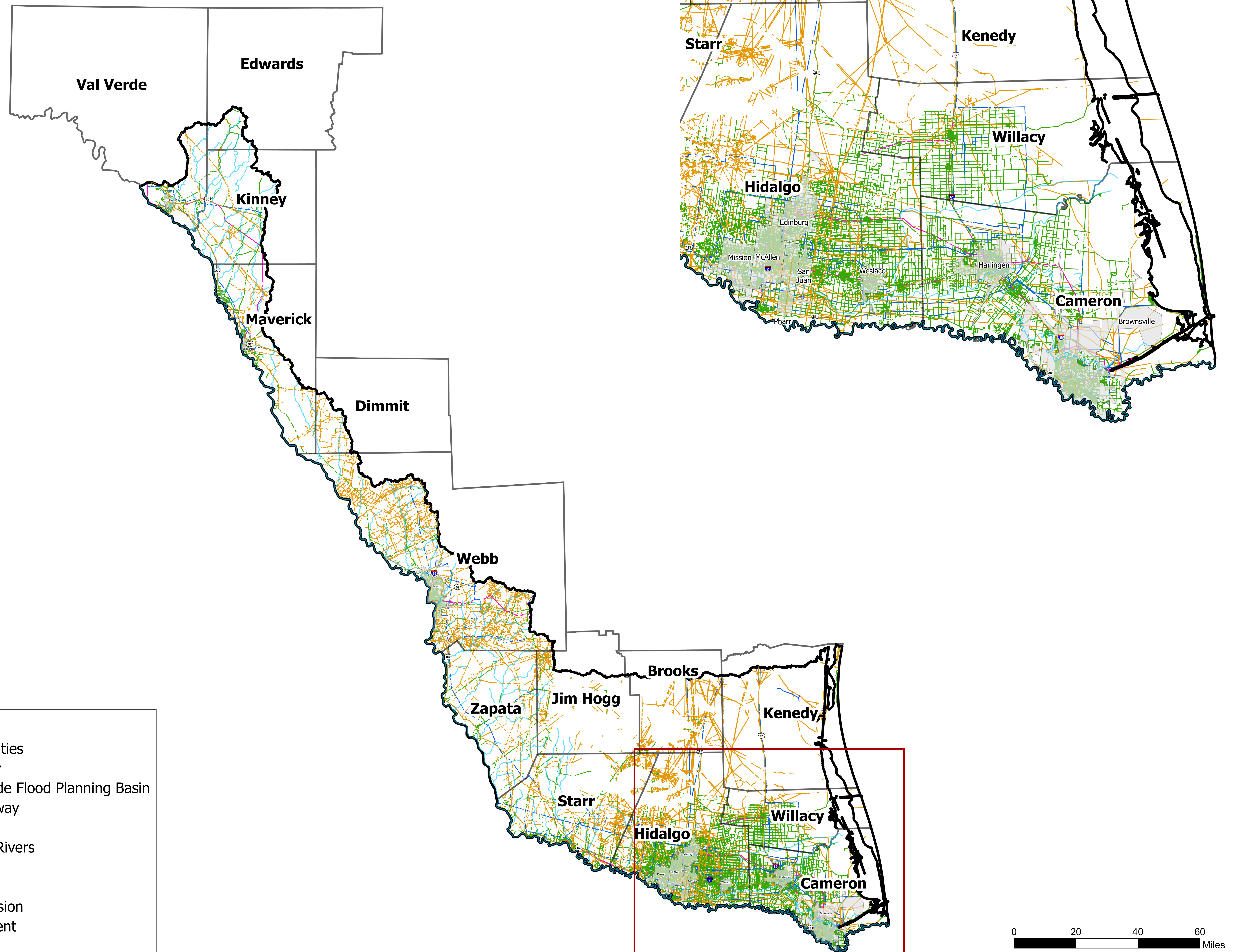
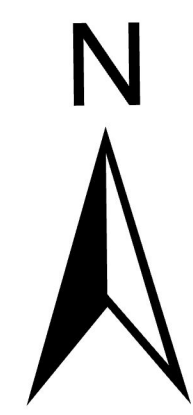
Key to Features

- Major Municipalities
- Regional County
- Lower Rio Grande Flood Planning Basin
- Interstate Highway
- US Highway
- Major Streams/Rivers

Flood Exposure

- Petroleum Storage
- Public Water System
- Roadway Stream Crossing
- Superfund Site
- Supplemental College
- University
- Wastewater Outfall

MAP 11A: FUTURE CONDITION FLOOD EXPOSURE
(PETROLEUM, CROSSINGS, COLLEGE, PUBLIC UTILITIES, AND SUPERFUND SITES)

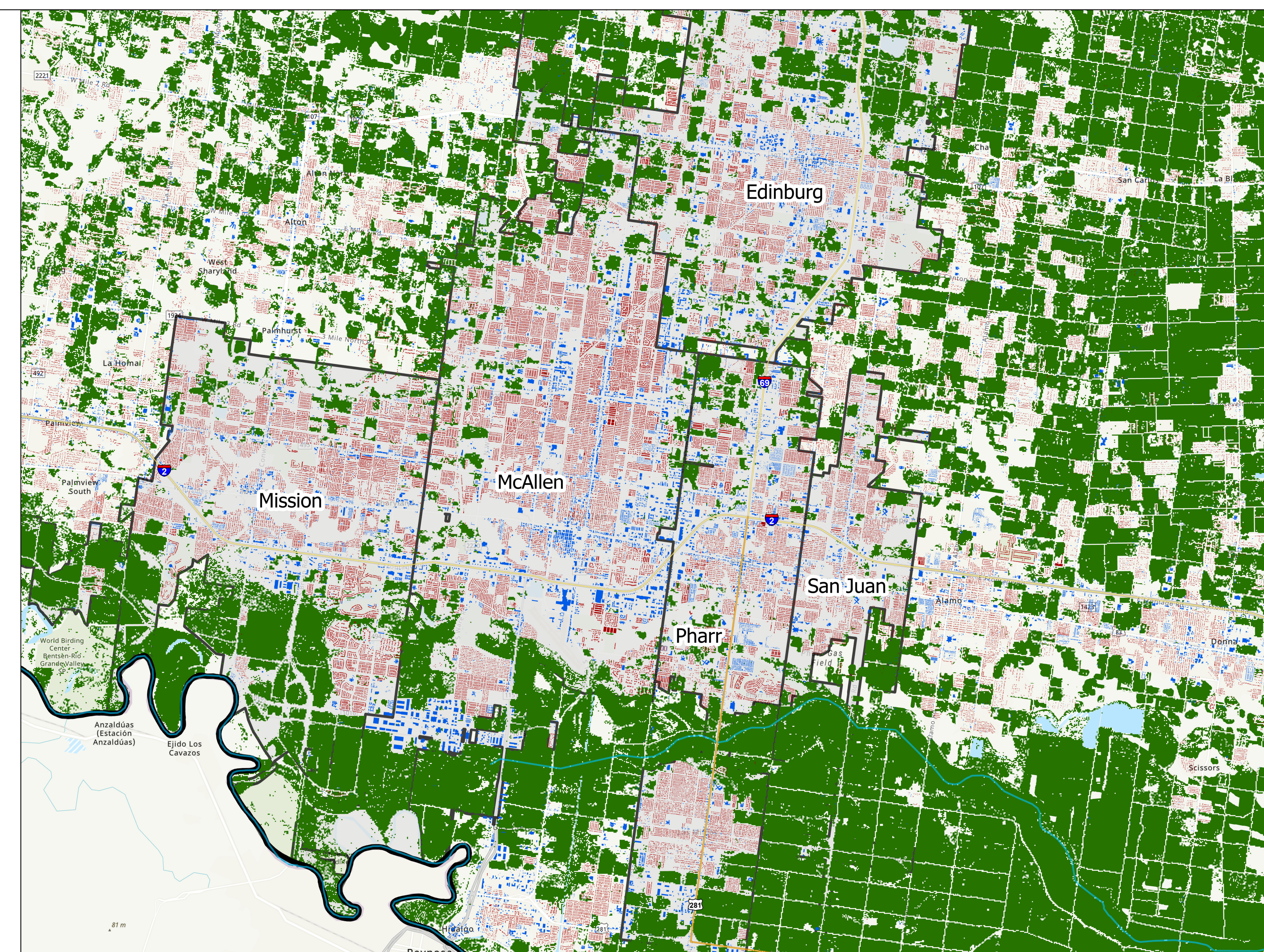
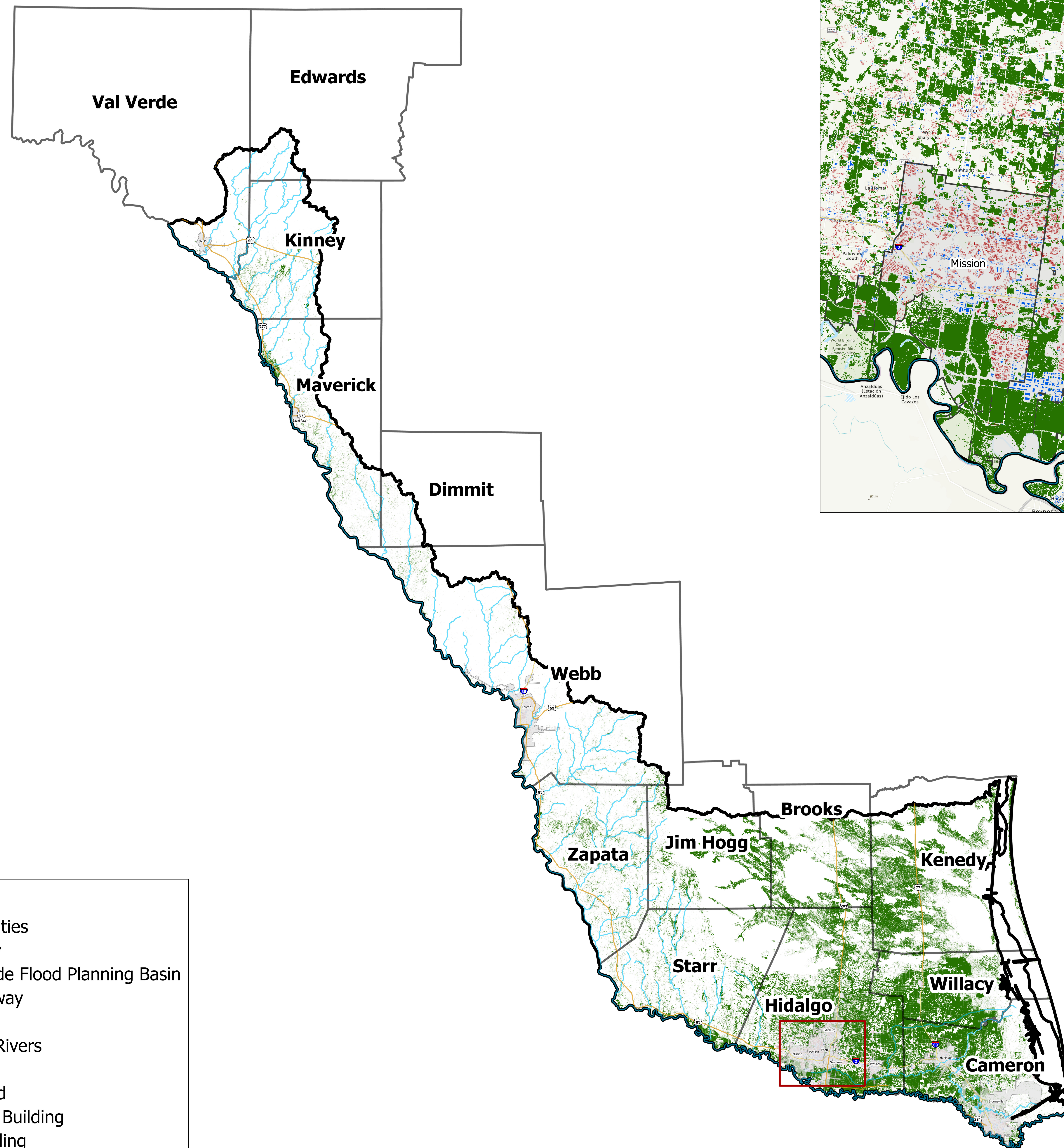
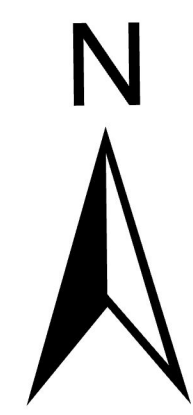


Key to Features

- Major Municipalities
- Regional County
- Lower Rio Grande Flood Planning Basin
- Interstate Highway
- US Highway
- Major Streams/Rivers

Flood Exposure

- Natural Gas
- Power Transmission
- Roadway Segment
- Railroad

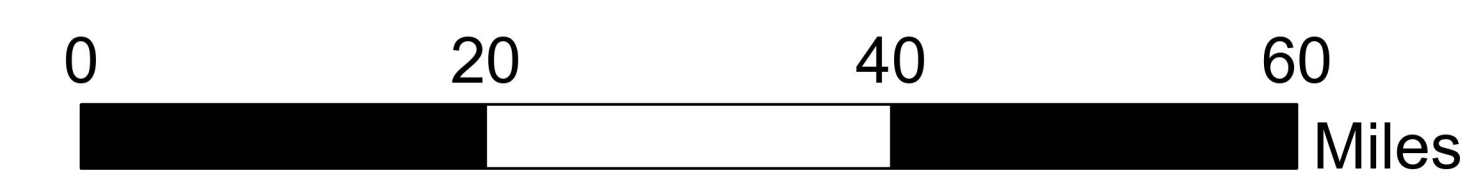


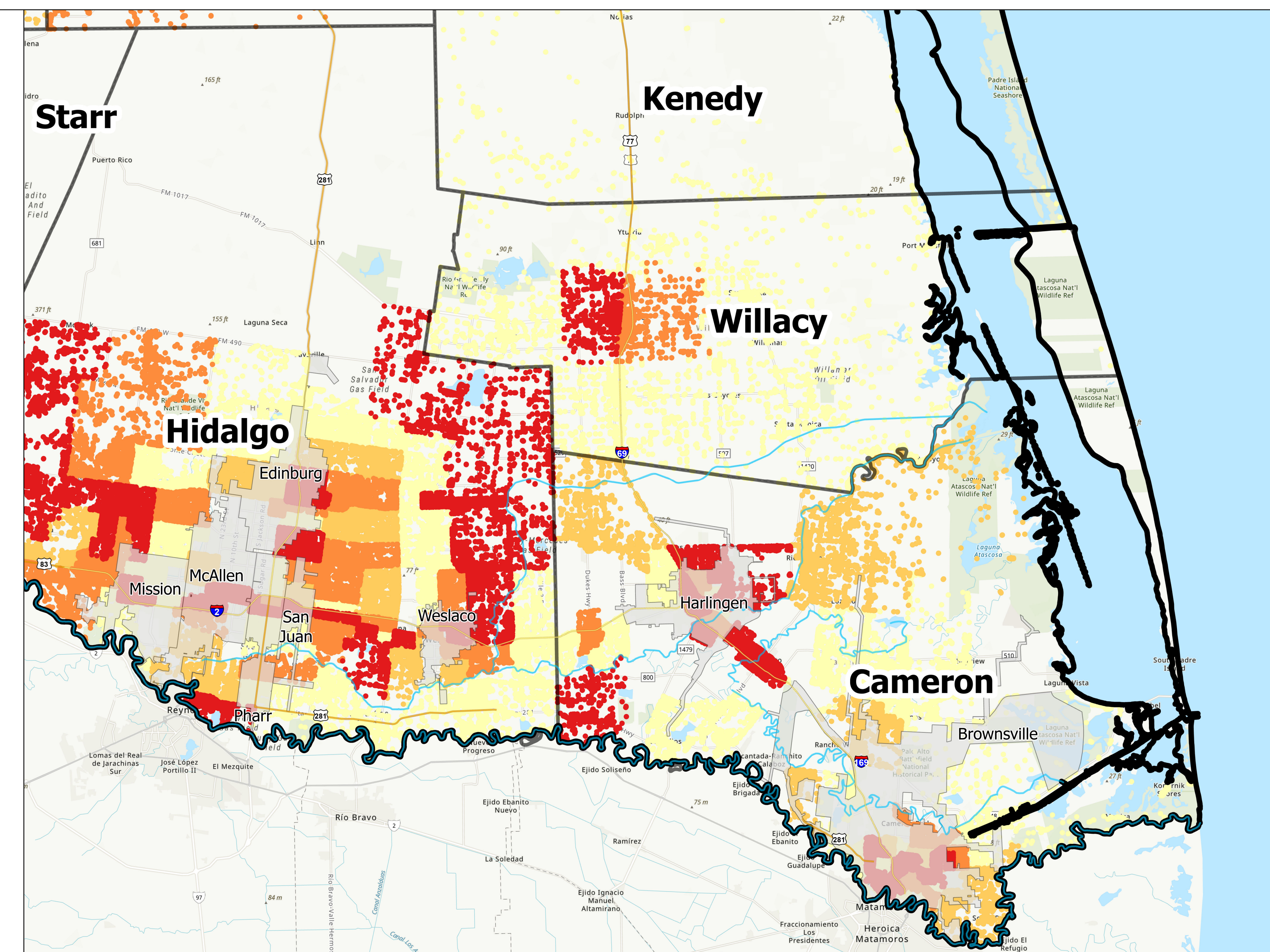
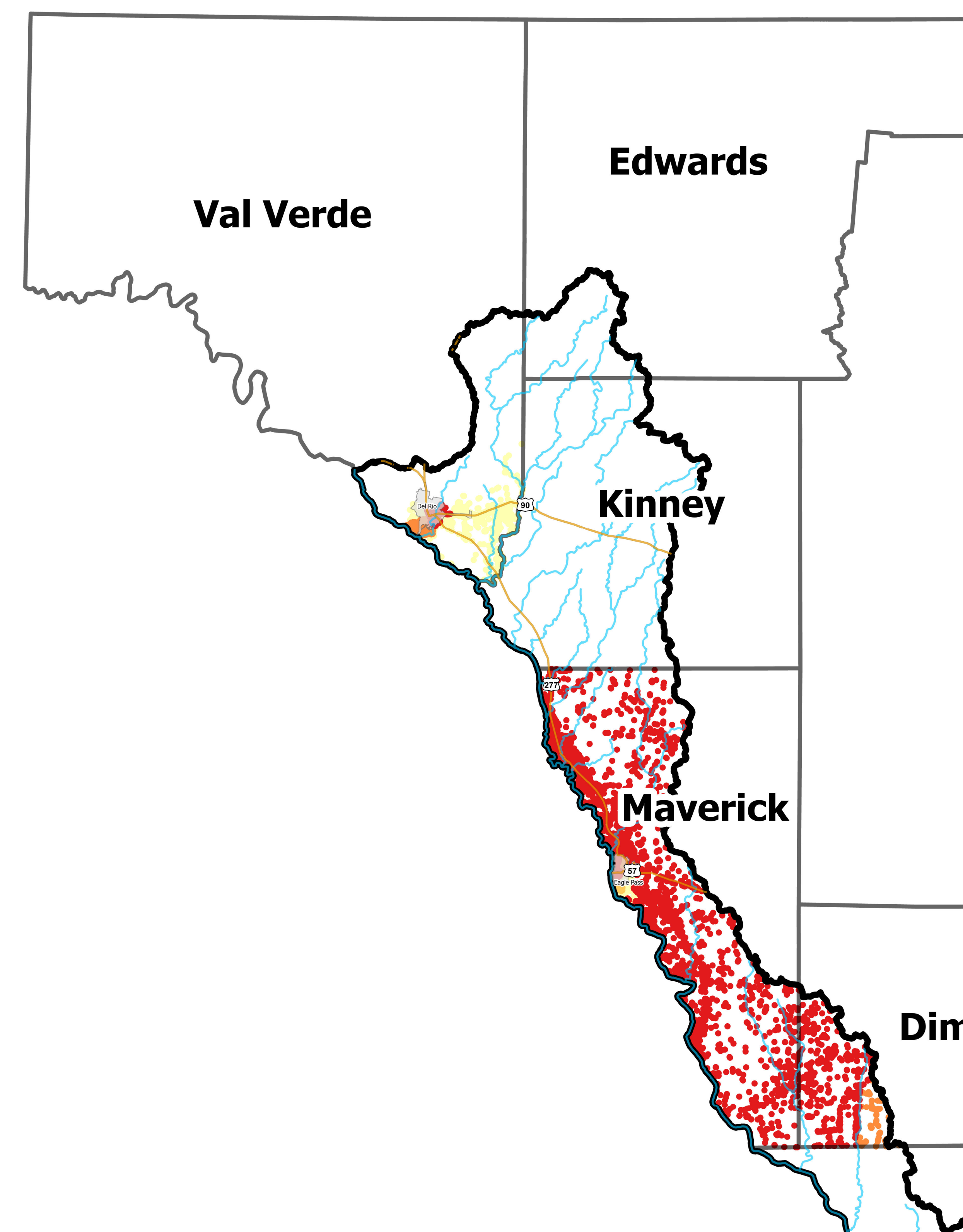
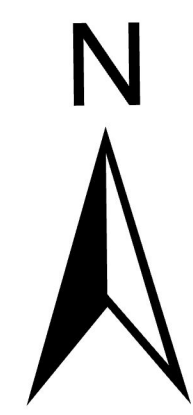
Key to Features

- Major Municipalities
- Regional County
- Lower Rio Grande Flood Planning Basin
- Interstate Highway
- US Highway
- Major Streams/Rivers

Flood Exposure

- Agricultural Land
- Non-Residential Building
- Residential Building



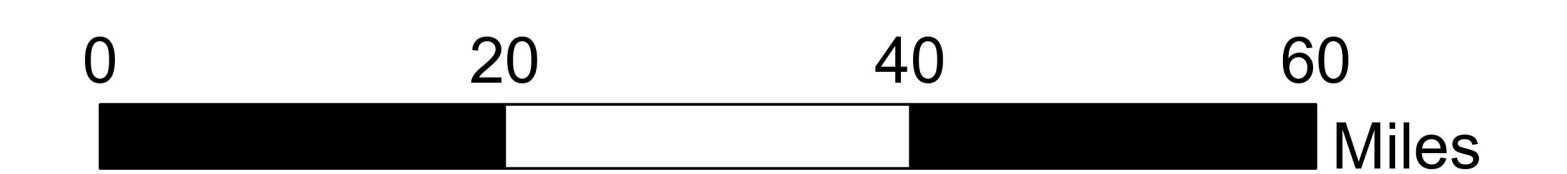
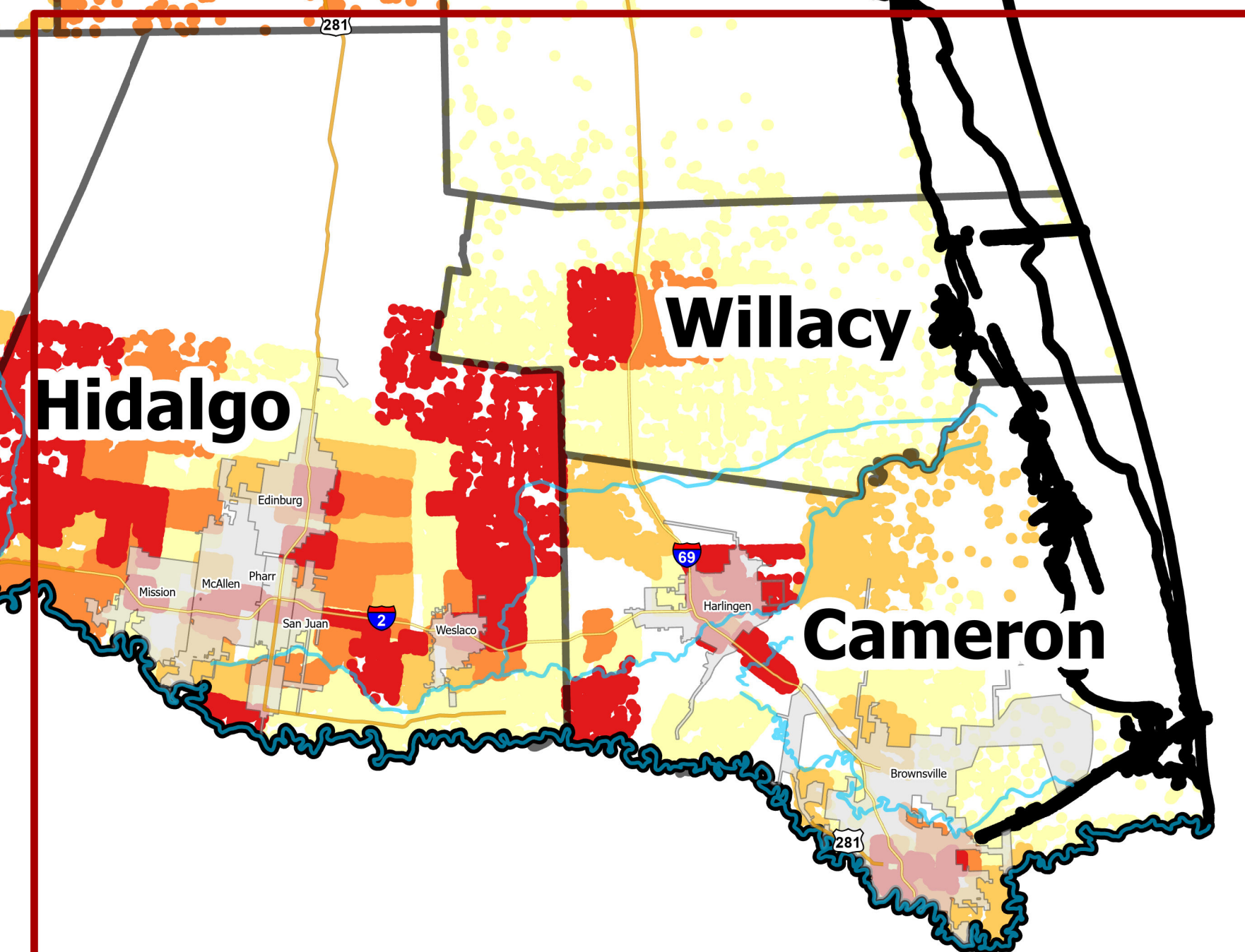


Key to Features

- Major Municipalities
- Regional County
- Lower Rio Grande Flood Planning Basin
- Interstate Highway
- US Highway
- Major Streams/Rivers

Critical Infrastructure with Social Vulnerability Index (Above 0.75)

- 0.75 - 0.85
- 0.85 - 0.90
- 0.90 - 0.95
- 0.95 - 1.00





HALFF ASSOCIATES, INC.
5000 WEST MILITARY HIGHWAY
SUITE 100
MCALLEN, TEXAS 78503
(956) 664-0286
WWW.HALFF.COM